



Weekly Report on COVID-19

COVID-19 සතිපතා වාර්තාව | COVID-19 வார அறிக்கை



Issue 2021 : 5

This report is based on COVID 19 cases from last 14 days

Period: 2021. 02. 01 to 2021. 02. 14

Published: 2021. 02. 15

COVID 19 Situation since 1st of January 2020

	Case	Deaths
Sri Lanka	76,428	403

Source: www.epid.gov.lk : 2021. 02. 15 : 10.45 pm

New cases reported in NWP

	Kurunegala	Puttlam	NWP
New cases reported from 2021. 01. 25	743	245	988
Total Cases from 2020. 10. 01	2,475	1,258	3,733
Total Deaths from 2020. 10. 01	37	12	49

COVID 19 Alert Related Definitions

❖ Proposed Regional Alert levels

(Localised adaptation based on Guideline number PA/DDGPHS ii/3/Covid/Gen/2020/ (Sub6) dated 03. 11. 2020 of Director General of Health Services) – See http://www.health.gov.lk/moh_final/english/

Proposed Regional Alert Level for MOH Division			
Number	Definition		Proposed functioning targeting minimizing the spread
Regional Alert Level 1 MOH Division	No active cases in the MOH Division		Entire MOH division function as in national alert level. (Currently Alert 2-3)
Regional Alert Level 2 MOH Division	One GN Division (within or bordering) is having active case(s)		- Designated GN area or a part of GN area to function as Level 4. - Other areas function as in national alert level (Currently Alert 2-.3)
Regional Alert Level 3 MOH Division	More than one GN Division (within or bordering) are having active case(s).		- Designated GN area or a part of GN area to function as Level 4. - Other areas function as level 3
Regional Alert Level 4 MOH Division	Community spread within the Division.		Entire MOH division to function as level 4.

❖ **Active Cases:** Cases became positive within last 14 days

❖ **High Risk GN areas:** GN area with one or more active cases.

Active Cases: Cases became positive within last 14 days

High Risk GN areas: GN area with one or more active cases.

Distribution of OVID 19 Cases in Kurunegala District

MOH Division		GN Areas with active cases (Only the GN Divisions with active cases are shown)	
Name (& Total Cases)	Proposed Regional Alert Level of MOH division for next week [Cases/GNs]	Name	Number of active cases
Alawwa (220)	Level 3 [112] [23 GN Areas]	Abbowa	4
		Alawwa North	13
		Alawwa South	20
		Boyawalana	1
		Divulgahakotuwa	3
		Galatharaya	1
		Henduwawa Colany	4
		Humuluwa East	2
		Kebellavita	3
		Kendehena	1
		Keppitiwalana	3
		Kiriwanapola	2
		Koholana	1
		Maharachchimulla	4
		Nawathalwatta	3
		Nugawela	11
		Paramaulla	1
		Vilgamuwa Watta	2
		Wennoruwa East	16
		Wennoruwa West	13
Wewala	1		
Yatigaloluwa	1		
Yattalgoda	2		
Ambanpola (74)	Level 3 [58] [8 GN Areas]	Ambakolawewa North	3
		Ambanpola North	2
		Amunugama	14
		Borawewa	5
		Dethawa	1
		Kirimetiya	1
		Udagama	2
		Udangawa	30
Bamunakotuwa (30)	Level 2	Demataluwa	2
		Ethanawatta	1
		Kelimune	2
		Nawagatta	1
		Walpola	1
Bingiriya (53)	Level 3 [28] [10 GN Areas]	Bingiriya	2
		Hamannapahuwa	1
		Hiruwalpola	3

Active Cases: Cases became positive within last 14 days

High Risk GN areas: GN area with one or more active cases.

		Horagasagara	10
		Kosagama	1
		Madulupitiya	1
		Padiwela	3
		Pahala Kiniyama	1
		Weerapokuna	5
		Wellarawa	1
Galgamuwa (33)	Level 2	Bongama	2
		Ehetuwewa	1
		Molewa	1
Ganewatta (45)	Level 2	Hiripitiya	2
		Kumbukgete	2
		Nikadalupotha	1
		Thambagalla	1
Giribawa (5)	Level 1	-	-
Ibbagamuwa (104)	Level 3 [41] [15 GN Areas]	Dewagiriya	1
		Diddeniya	1
		Galketigama	2
		Godagama	1
		Hiddana	1
		Hipawwa	11
		Ibbagamuwa	3
		Ipalawa	1
		Karandagolla	2
		Kimbulwana Oya	1
		Nindapella	1
		Pannala	4
		Periya Kadunelawa	1
		Thalgodapitiya	8
Udawela	3		
Katupotha (87)	Level 3 [30] [13 GN Areas]	Alahitiyawa	1
		Arakyala	1
		Barigoda	4
		Bogahapitiya	2
		Bogamulla	1
		Deekirikewa	4
		Galgammulla	2
		Horombawa	5
		Karangamuewa	4
		Medelpola	1
		Molligoda	1
		Nakkawatta	1
		Siyambalankotuwa	2
Kobeigane (15)		Hengamuwa	1
		Hirigolla	1
		Vinikuliya	1
Kotawehera (24)	Level 3 [9] [5 GN Areas]	Kirinda A	1
		Monnekulama	6
		Moragolla	3
		Nagala	1
		Nawana	1

Active Cases: Cases became positive within last 14 days

High Risk GN areas: GN area with one or more active cases.

Kuliyapitiya (194)	Level 3 [30] [18 GN Areas]	Anukkane	1
		Dandagamuwa West	1
		Deegalla	1
		Deeyawala	1
		Ihala Ennaruwa	2
		Ihala Piduma	1
		Ilukhena	1
		Kirindawa	1
		Kithalawa	6
		Kongahagedara	1
		Kongolla	2
		Kuliyapitiya Town	3
		Narangalla	1
		Pahala Elathalawa	1
		Pahala Embawa	1
		Pallewela	1
Udihitimulla	1		
Wewagama	4		
Kurunegala (149)	Level 3 [54] [12 GN Areas]	Bamunawala	9
		Bamunugedara	1
		Budanapitiya	5
		Dematagolla	3
		Henamulla	1
		Kudumbawa	3
		Malkaduwawa	2
		Malkaduwawa Colony South	1
		Mathawa	2
		Thalvita	2
		Wehera West	1
		Wellawa	2
Maho (38)	Level 3 [21] [9 GN Areas]	Divullewa	1
		Karambe	6
		Kumbukwewa	2
		Mahawa East	1
		Mahawa West	1
		Metiyakgama	6
		Moonamalegama	1
		Pailigama	2
		Uduweriya	2
Mallawapitiya (148)	Level 3 [39] [11 GN Areas]	Bodhigama	2
		Doratiyawa	1
		Kahatapitiya	1
		Katupitiya North	1
		Mahagama	1
		Mallawapitiya	19
		Meddegama West	3
		Mehiella North	1
		Millawa	1
		Pillawa	3
		Thorayaya	4

Active Cases: Cases became positive within last 14 days

High Risk GN areas: GN area with one or more active cases.

Maspotha (Link to Kurunegala)	Level 3 [19] [11 GN Areas]	Aswedduma	1
		Galagedara	2
		Gonagama	2
		Hettigedara	1
		Kalahogedara	1
		Kidapola	1
		Kudalgamuwa	1
		Maspotha	1
		Rathkarawwa	3
		Siyambalangamuwa	4
		Thittawella	2
Mawathagama (183)	Level 3 [63] [25 GN Areas]	Akade	2
		Arampola	4
		Arampola Watta North	1
		Bandaragalawatta	2
		Boyagoda	1
		Delgolla Watta North	1
		Halwahala	1
		Hidagolla	3
		Ihala Weligepola	1
		Kahapathwala	4
		Katugampalagedara	3
		Kotikapola	3
		Kotikapola Ihalagama	1
		Madawa	2
		Maladeniya	1
		Maralanda	1
		Mawathagama	13
		Metibokka	4
		Paragahadeniya	1
		Tigola	1
Uda Inguruwatta	1		
Udanagama	1		
Wadiyagoda	5		
Wambugamgoda	1		
Watareka	5		
MC Kurunegala (135)	Level 3 [135] [8 GN Areas]	Ilippugedara	3
		Kurunegala Town - Bazaar	4
		Kurunegala Town - Central	2
		Kurunegala Town - East	2
		Kurunegala Town - North East	4
		Kurunegala Town - West	2
		Kurunegala Town Udawalpola	3
		Theliyagonna	3
Narammala (63)	Level 2	Ambagammana	4
		Dambadeniya North	1
		Dambagirigama West	1
		Kadahapola	1
		Metiyagane East	1
Nikaweratiya (37)	Level 3 [11]	Karakole	7

Active Cases: Cases became positive within last 14 days

High Risk GN areas: GN area with one or more active cases.

	[5 GN Areas]	Kivulegama	1
		Nabadewa	1
		Randenigama	1
		Wasiwewe	1
Panduwasnuwara East (27)	Level 3 [27] [2 GN Areas]	Adukkane	7
		Wetehepitiya	1
Panduwasnuwara West (66)	Level 2	Bamunumulla	4
		Bandara Koswatta	1
		Dolohomuna	1
		Epaladeniya	1
		Ganegama	1
		Girathalawa	1
		Hettipola	1
		Karagahagedara	1
		Konwewa	2
		Nagollagoda	1
		Pahala Gomugomuwa	1
		Pihimbiya	1
Pannala (278)	Level 3 [61] [29 GN Areas]	Badabedda	1
		Bopitiya	3
		Bowatta	2
		Elabadagama East	2
		Elabadagama North	2
		Elivila	2
		Eroopola	5
		Hamangalla	1
		Hendiyagala	3
		Ihala Galayaya	1
		Ihala Labbala	1
		Ihala Makandura	1
		Kandepola	1
		Kongoda	1
		Kotuwella	1
		Maholawa	1
		Malgamuwa	1
		Medirivila	3
		Narangoda North	3
		Narangoda South	1
		Pahala Galayaya	3
		Pannala	14
		Pethigodagedara	2
		Sandalankawa	1
		Thalammehera	1
		Thelambugamma	1
		Udugama	1
		Welpalla	1
		Wetakeyawa	1
Polgahawela (186)	Level 2	Bevilgamuwa West	1
		Dewalepola	2
		Egalla	1

Active Cases: Cases became positive within last 14 days

High Risk GN areas: GN area with one or more active cases.

		Embalawattha	1
		Gammana	1
		Godawela	1
		Hathalispahuwa	1
		Kaluhendiwela	1
		Kendahena	1
		Mawathagama	1
		Meddalanda	1
		Oruliyadda	1
		Polgahawela North	3
		Polpitiya North	1
		Polpitiya South	1
		Rathmalgoda	1
		Walagammulla	1
		Ambagaswewa	1
		Elagamuwa	1
		Herathgama	1
		Indigolla	1
		Maeliya South	1
		Makulpotha	1
		Moragollagama	2
		Pallekele	1
Rasnayakapura (1)	Level 2	Agara Uda	1
Rideegama (112)	Level 2	Ambakote	6
		Buluwala	1
		Jakaduwa	2
		Kanadeniyawala	1
		Karandagolla	2
		Kosgollepola	1
		Nahalla	5
		Pusselikanda	1
Pussella	13		
Udubaddawa (37)	Level 2	Ammanamulla	2
		Dummalasooriya	2
		Dunakadeniya North	2
		Henegedara	1
		Ihalagama North	1
		Kumbukgahamulla	2
		Nawasigahawatta	1
		Pahalagama	1
		Siyambalagasruppa East	1
		Siyambalagasruppa West	1
Wathuwatta	2		
Wariyapola (39)	Level 2	Avulegama	8
		Elavitigama	1
		Halmillewa	1
		Ipalawa	1
		Karandawetiya	1
		Mellapotta	1
		Minuwangate	2

Active Cases: Cases became positive within last 14 days

High Risk GN areas: GN area with one or more active cases.

		Mirihanegama	1
		Nabadawewa	1
		Naramana	1
		Padeniya	1
		Thennakongama	1
		Walpaluwa	1
		Wanduressa Welgala	1
		Wewagedara	1
Weerambugedara (52)	Level 2	Gallehera	1
		Gonawa	2
		Kalugamuwa	1
		Lokahettiya	1
		Poogalla	1
		Ranjanagama	1
		Udugama	1
		Uhumeeya	2
Total (Cumulative Total : 2,475)			743

COVID-19 Risk Level Map in Kurunegala District





Regional Risk level assessment based on last 14 days reported cases

(Period 01st February 2021 to 14th February 2021)

High Risk GN Areas

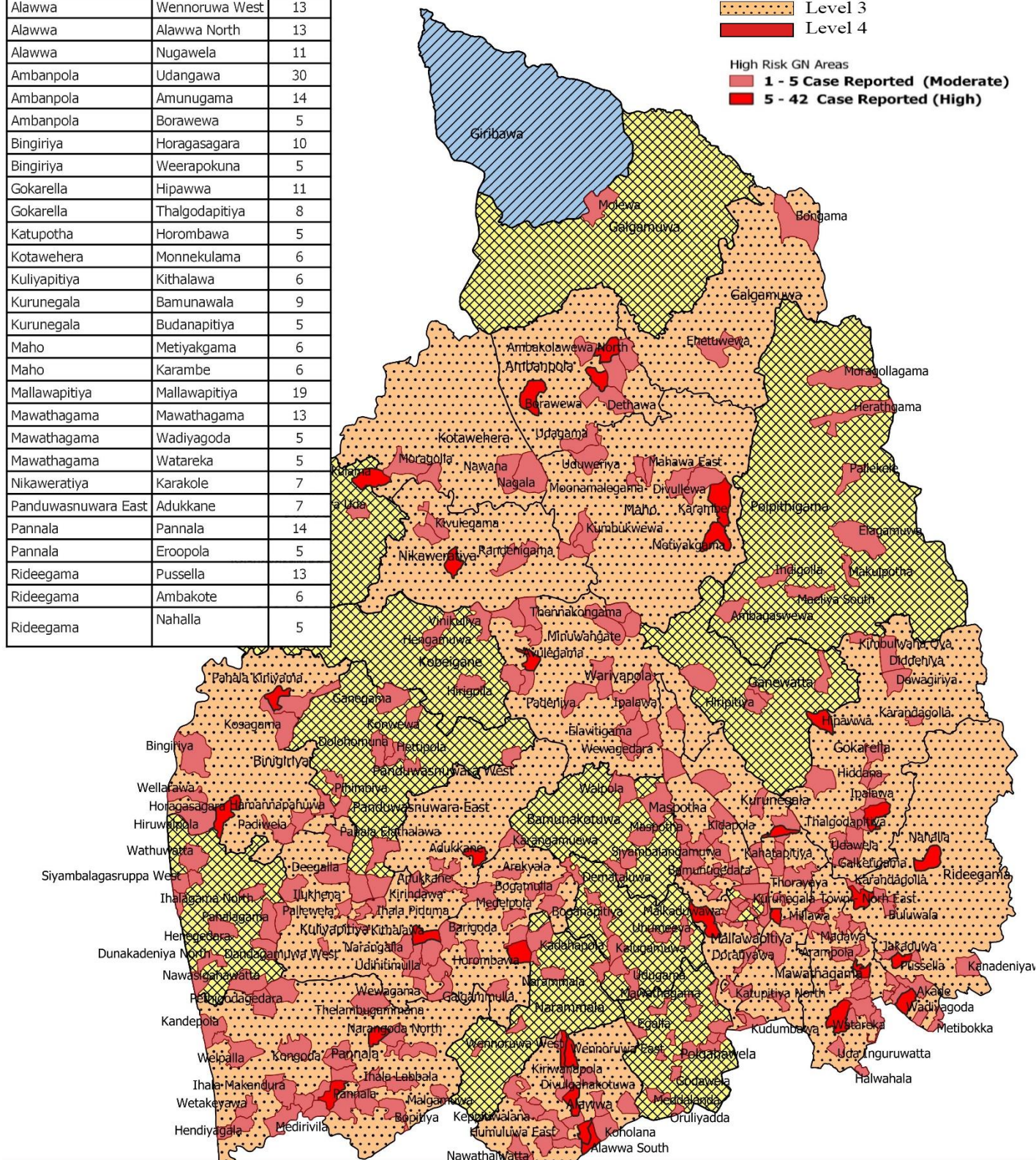
MOH Division	GN Area	Cases #
Alawwa	Alawwa South	20
Alawwa	Wennoruwa East	16
Alawwa	Wennoruwa West	13
Alawwa	Alawwa North	13
Alawwa	Nugawela	11
Ambanpola	Udangawa	30
Ambanpola	Amunugama	14
Ambanpola	Borawewa	5
Bingiriya	Horagasagara	10
Bingiriya	Weerapokuna	5
Gokarella	Hipawwa	11
Gokarella	Thalgodapitiya	8
Katupotha	Horombawa	5
Kotawehera	Monnekulama	6
Kuliyapitiya	Kithalawa	6
Kurunegala	Bamunawala	9
Kurunegala	Budanapitiya	5
Maho	Metiyakgama	6
Maho	Karambe	6
Mallawapitiya	Mallawapitiya	19
Mawathagama	Mawathagama	13
Mawathagama	Wadiyagoda	5
Mawathagama	Watareka	5
Nikaweratiya	Karakole	7
Panduwasnuwara East	Adukkane	7
Pannala	Pannala	14
Pannala	Eroopola	5
Rideegama	Pussella	13
Rideegama	Ambakote	6
Rideegama	Nahalla	5

Regional alert levels for MOH Divisions

-  Level 1
-  Level 2
-  Level 3
-  Level 4

High Risk GN Areas

-  1 - 5 Case Reported (Moderate)
-  5 - 42 Case Reported (High)



Update on 15th of February 2021, 4.30pm

Map Composer : Ranjan Vipulashantha, HIMU, NWP

Distribution of COVID 19 Cases in Puttlam District

MOH Division		GN Areas with active cases (Only the GN Divisions with active cases are shown)	
Name (& Total Cases)	Proposed Regional Alert Level of MOH division for next week [Cases/GNs]	Name	Number of active cases
Anamaduwa (24)	Level 3 [8] [2 GN Areas]	Labugala	7
		Thonigala	1
Arachchikattuwa (90)	Level 2	Rajakadaluwa	4
Chilaw (142)	Level 3 [9] [3 GN Areas]	Deduruoya	5
		Merawala	1
		Thimbilla	3
Dankotuwa (274)	Level 3 [67] [13 GN Areas]	Dankotuwa East	2
		Godella	1
		Ihala Bujjampola	3
		Katukenda West	1
		Kirimetiya North	1
		Lihiriyagama	1
		Meda Gonavila	2
		Meda Katukenda	4
		Mellawa	44
		Metikotuwa	3
		Morukkuliya	4
		Pothuwatawana	1
Sendiriyamulla	1		
Kalpitiya (38)	Level 2	Daluwa	2
		Kandakuliya	1
		Karamba	1
		Mampuriya	1
		Narakkalliya	1
		Norochchola	3
		Wanni Mundalama	1
Karuwalagaswewa (23)	Level 2	Karuwalagaswewa	2
		Thabbowa South	1
		Thambapanniya	1
Madampe (46)	Level 2	Galahitiyawa	1
		Mahabaddegama	1
		Marakkalagama	3
		Mellawagara	4
		Pothuvila	3
		Uraliyagara	1
Mahakumbukkadawala (Link with Pallama)	Level 2	Baranankattuwa	1
		Daluwegama	2
		Galkuliya East	4
		Galkuliya West	1
		Garayakgama	1

Active Cases: Cases became positive within last 14 days

High Risk GN areas: GN area with one or more active cases.

		Karungalisole	2
		Mohoriya	4
		Punavitiya	1
Mahawewa (39)	Level 2	Halpanvila West	1
		Ihala Koswadiya	1
		Maravila North	2
		Meda Thoduwawa	2
		Panangoda	1
		Thalvila	1
Mundel (151)	Level 3 [46] [8 GN Areas]	Angunavila	1
		Kottanthievu	1
		Mundalama	6
		Palli Wasalpaduwa	2
		Pulichchakulama	14
		Sameeragama	1
		Tharakudivilluwa	2
		Udappuwa	19
Nattandiya (113)	Level 2	Ihala Kottaramulla	1
		Koswatta North	2
		Meda Katuneriya	2
		Morakele South	2
		Mudukatuwa South	2
		Naravila	4
		Pahala Kottaramulla	1
		Pahala Nattandiya	1
		Sandanangama	1
		Thunmodara West	1
		Weerahena East	2
Yakadessawa	1		
Nawagattegama (113)	Level 2	Mullegama	1
Pallama (50)	Level 2	Nagavila	1
		Thamarakkulama	1
Puttalam (77)	Level 2	Attavilluwa	1
		Kaladiya	1
		Pottuvilluwa	1
		Puttalam North	1
		Puttalam Parana Jumma Palli Kudirippuwa	1
		Puttalam South	1
		Sirambiadiya	1
		Thiladiya	2
Wennappuwa (191)	Level 3 [28] [16 GN Areas]	Boralessa East	2
		Boralessa South	1
		Dummaladeniya East	1
		Kadawatha	1
		Kolinjadiya South	4
		Kolinjadiya West	2
		Lunuwila West	5
		Meda Uihitiyawa	1
		Meda Wennappuwa	1

Active Cases: Cases became positive within last 14 days

High Risk GN areas: GN area with one or more active cases.

		Mirissankotuwa South	1
		Nainamadama East	2
		Nainamadama West	1
		Ulhitiyawa South	1
		Ulhitiyawa West	1
		Waikkala North	2
		Waikkala South	1
Total (Cumulative Total :1,258)			245

Distribution of Contacts under quarantine by MOH Divisions

In Kurunegala District (01. 02. 2021 – 14. 02. 2021)

SN	MOH Area	Total No Quarantined Since 2020. 10. 01	No of Contacts under quarantine
1	Alawwa	2347	424
2	Ambanpola	395	123
3	Bamunakotuwa	696	120
4	Bingiriya	608	25
5	Galgamuwa	1295	70
6	Ganewaththa	672	192
7	Giribawa	415	24
8	Ibbagamuwa	2144	322
9	Katupotha	1750	90
10	Kobeigane	696	56
11	Kotawehera	323	92
12	Kuliyapitiya	2234	105
13	Kurunegala	1063	87
14	Maho	886	380
15	Mallawapitiya	3374	284
16	Mawathagama	2459	318
17	MC Kurunegala	995	216
18	Narammala	1622	95
19	Nikawaratiya	1037	93
20	Panduwasnuwara-E	1620	115
21	Panduwasnuwara-W	2045	210
22	Pannala	5698	890
23	Polgahawela	3057	302
24	Polpithigama	2371	238
25	Rasnayakapura	156	41
26	Rideegama	1576	143
27	Udubaddawa	1447	89
28	Wariyapola	1129	193
29	Weerambagedara	1285	224
	Total	45,395	5,561

Date of Data Source: 2021. 02. 15

Active Cases: Cases became positive within last 14 days

High Risk GN areas: GN area with one or more active cases.

Distribution of Contacts under quarantine by MOH Divisions

In Puttlam District (16. 02. 2021)

SN	MOH Area	Total No Quarantined Since 2020. 10. 08	No of Contacts under quarantine
1	Anamaduwa		43
2	Arachchikattuwa		28
3	Chilaw		134
4	Kalpitiya		91
5	Karuwalagaswewa		67
6	Madampe		173
7	Mahawewa		34
8	Mundel		173
9	Nattandiya		86
10	Pallama		43
11	Puttlam		328
12	Wennappuwa		178
13	Anamaduwa		43
	Total		1,378

Date of Data Source: 2021. 02. 14

Distribution of COVID 19 diagnosed patients in Healthcare Institutions

Treatment Centres and Intermediate Centres	Bed Capacity	Patient Number 2021. 02. 16 Midnight	Admission within Last Week (07/02/2021 – 14/02/2021)
Kurunegala			
BH Galgamuwa	33	8	
DH Ambanpola	60	46	
Dambadeniya Intermediate Care Centre	336	301	
DH Narammala	60	46	
Giriulla MAS	400	333	
Total	889	734	
Bingiriya Intermediate Care Centre	550	430	
Iranawila Treatment Centre	140	107	
DH Dankotuwa	77	74	
Total	768	611	
Total of Province	1,656	1,345	

Note: There could be discrepancy in data due to practical reasons. Any errors will be corrected and shown in next issue.

COVID 19 Specific Investigations

PCR Activities

	Kurunegala		Puttlam		NWP
	Since 2020. 10. 01	Since 2021. 02. 01 to 2021. 02. 14	Since 2020. 10. 01	Since 2021. 02. 01 to 2021. 02. 14	
TH Kurunegala, TH Kuliypitiya	6719	-	7,731		xx
PCR Sample Collected - In-ward + OPD	9,215	161			xx
PCR Sample Collected - Field	42,814	4,215	16,187		xx
Total Sample Collected	58,748	4,376	23,918		82,666

Data Source: Regional directorates of health services Kurunegala & Puttlam.

COVISHIELD Vaccination Activities

District	Target (Total Health workers)	Vaccinated health workers
Puttlam	3,652	3068 (84%)
Kurunegala	9,142	8195 (89.9%)
NWP	12,794	11,263 (88%)

For further details, Contact

Telephone : +94 37 2223479 (Ext – 215)

+94 37 2225582 Fax : +94 37 2225581

eMail : ccpnwp2014@gmail.com, info@healthdept.nw.gov.lk

Web : www.healthdept.nw.gov.lk

